

D-Ring Accessory Installation Kit

READ THESE INSTRUCTIONS COMPLETELY BEFORE YOU START. IF YOU DON'T UNDERSTAND THESE INSTRUCTIONS, PLEASE CALL 800-453-1192 FOR ASSISTANCE.

Procedure for installing the D-Ring accessory on Little Giant Ladder Systems **Aircraft Support** ladders.

1. Failure to comply with all instructions may result in serious injury.
2. Make sure this kit is compatible with your ladder. If you have any questions concerning the use of this kit on Little Giant Ladder Systems products, call 800-453-1192 for assistance.
3. Before installing this kit, identify all kit components. If any components are missing or damaged, please contact Customer Care. Do not substitute any components.
4. Inspect the ladder before installing this kit. Repair or replace any damaged or missing ladder parts before using the ladder. Use only Little Giant Ladder Systems repair or replacement parts. If you are unable to repair it, discard the ladder.

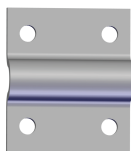
COMPONENTS IN I5370 KIT



#50233 D-Ring (4)



#57201 Pop Rivet (16)



#20228 D-ring Clamp (4)

TOOLS NEEDED



(1) Drill



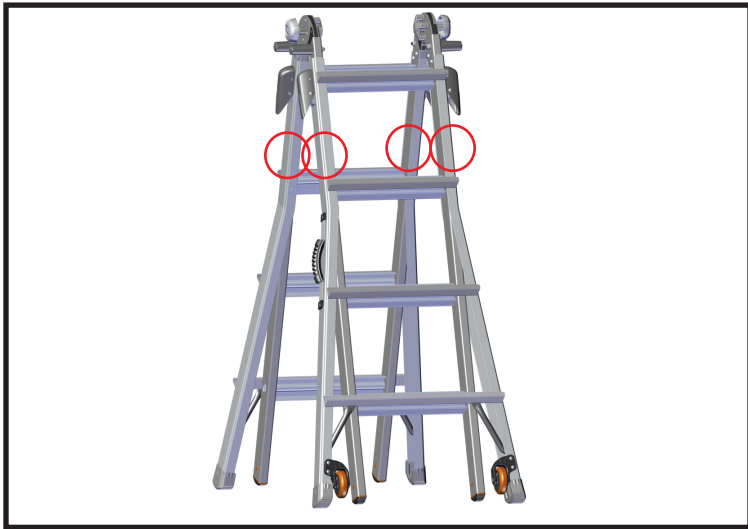
(1) Rivet Gun



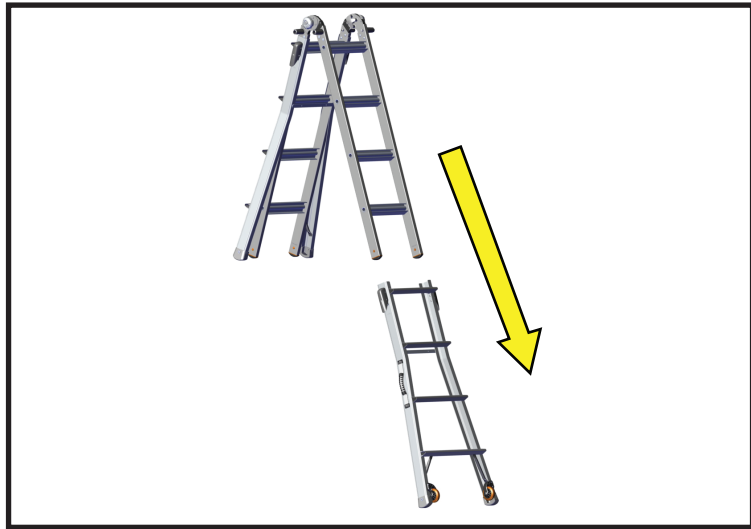
(1) 13/64" or 5 mm Drill Bit

NOTE: IF ANY OTHER PART OF THE LADDER IS DAMAGED BEFORE OR DURING THE PROCESS OF INSTALLING AND/OR REPAIRING, DISCARD THE LADDER OR CONTACT CUSTOMER CARE FOR INSTRUCTIONS.

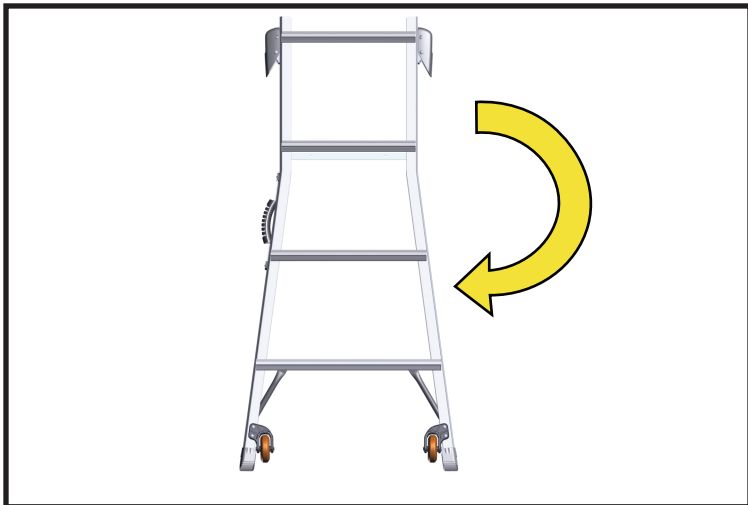
DO NOT USE A DAMAGED LADDER!



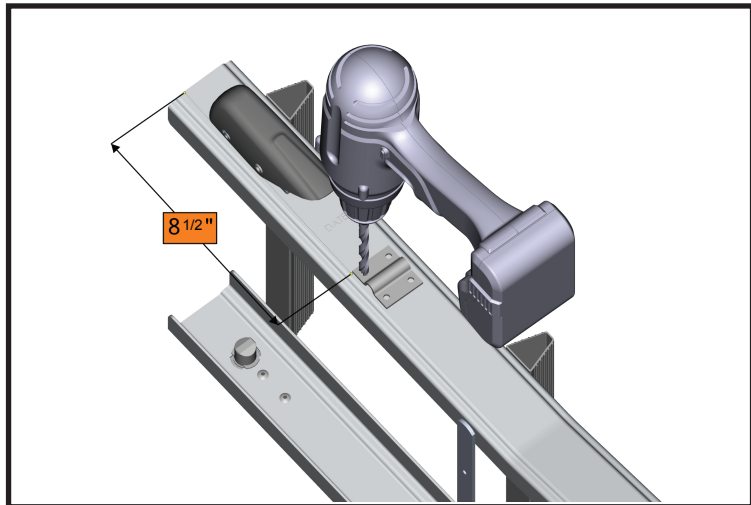
1. Identify the four area's where the D-Rings will be installed.



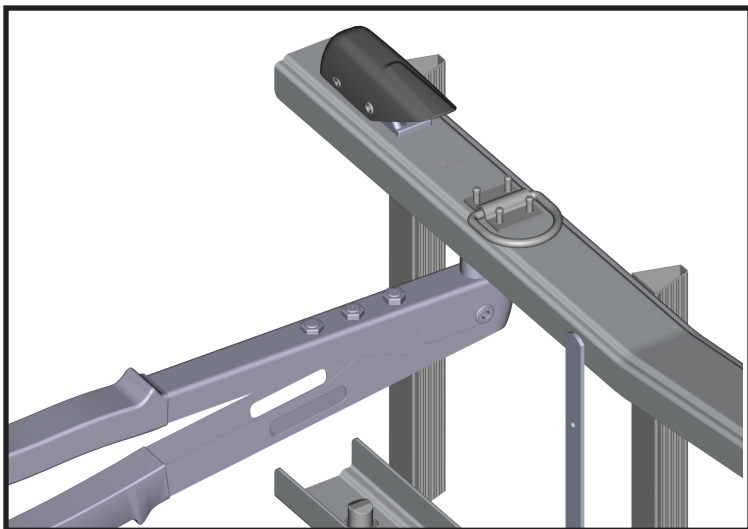
2. Remove outer assembly.



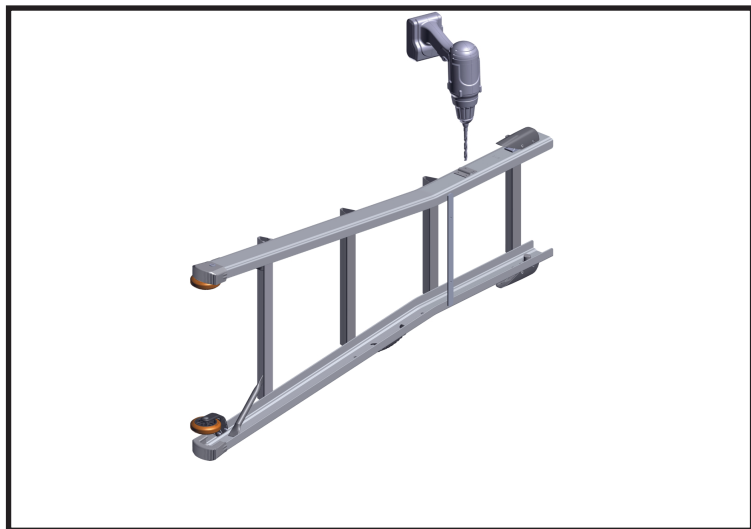
3. Lay outer assembly on its side.



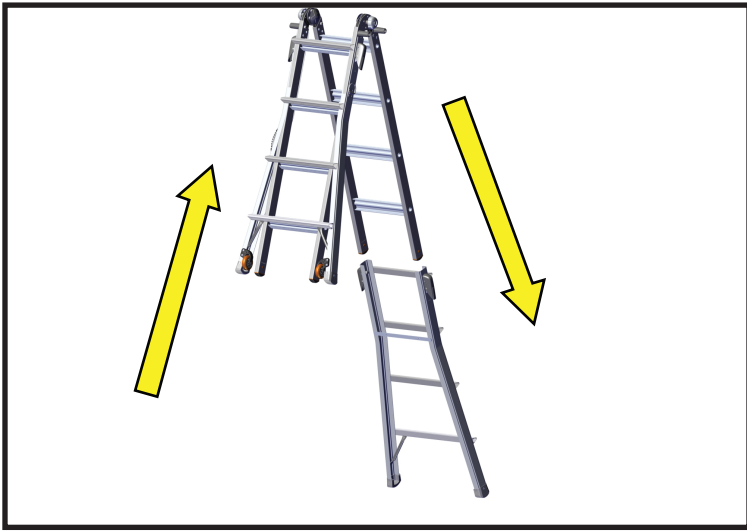
4. Align two holes on the D-Ring clamp 8 1/2" from the top of the outer assembly and centered on the width of the rail. Using the D-Ring clamp as a guide, drill four holes into the outer assembly.



5. Place D-ring underneath the D-Ring Clamp, secure D-Ring clamp into place with (4) pop rivets and a rivet gun.



6. Flip outer onto the opposite side and repeat steps 4-5.



7. Replace the finished outer assembly and repeat steps 2-6 on the opposite outer assembly.